

S42i+

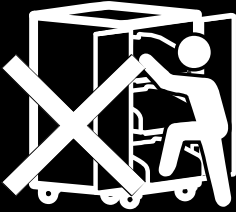
User Manual



WARNING

ALWAYS FOLLOW SAFETY PRECAUTIONS

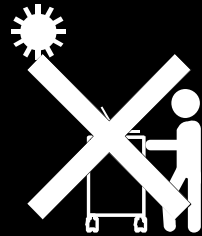
NEVER climb, sit
or stand on the cart.



ONLY ADULTS should
move the cart.



To reduce risk
of electric shock
ONLY use indoors.



⚠ CAUTION

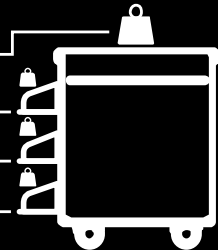
This cart is intended for
use only with loading as
indicated. Use with loads
greater than indicated
may result in instability
causing possible injury.

≤ 44.1lbs (20kg) —

≤ 77.2lbs (35kg) —

≤ 77.2lbs (35kg) —

≤ 77.2lbs (35kg) —



Please place the devices from the bottom to top shelf to avoid the tilting.

- Death or serious injury may occur when children climb on audio and/or video equipment furniture. A remote control or toys placed on the furnishing may encourage a child to climb on the furnishing and as a result the furnishing may tip over on to the child.
- Relocating audio and/or video equipment to furniture not specifically designed to support audio and/or video equipment may result in death or serious injury due to the furnishing collapsing or over turning onto a child.

CAUTION!

- **DO NOT** allow anyone to sit, stand or climb on the cart.
- **DO NOT** lift the cart.
- **DO NOT** block the ventilation holes used for air circulation.
- **DO NOT** overload objects on the cart shelves. (work platform maximum loading = 20kg / 44.1lbs; each pull-out shelf maximum loading = 35kg / 77.2lbs).
- **DO NOT** put any devices that the weight is over the maximum loading weight on top of cart.
- When moving the cart, **DO NOT** put any devices (ex: TV, Monitor, Documents camera...etc.) on top of cart.
- No TV/monitor is to be used on top of cart.
- Before moving the cart, disconnect the power from the wall outlet.
- While moving the cart, make sure the power cord is secured and tightly wrapped.

FCC NOTICE (Class A)



This device complies with Part 15 of the FCC Rules. Operation is subject to the following two conditions: (1) this device may not cause harmful interference, and (2) this device must accept any interference received, including interference that may cause undesired operation.

Federal Communications Commission Statement

NOTE- This equipment has been tested and found to comply with the limits for a Class A digital device, pursuant to Part 15 of the FCC Rules. These limits are designed to provide reasonable protection against harmful interference in a residential installation. This equipment generates uses and can radiate radio frequency energy and, if not installed and used in accordance with the instructions, may cause harmful interference to radio communications. However, there is no guarantee that interference will not occur in a particular installation. If this equipment does cause harmful interference to radio or television reception, which can be determined by tuning the equipment off and on, the user is encouraged to try to correct the interference by one or more of the following measures:

- Reorient or relocate the receiving antenna.
- Increase the separation between the equipment and receiver.
- Connect the equipment into an outlet on a circuit different from that to which the receiver is connected.
- Consult the dealer or an experienced radio/television technician for help.

Class A ITE

Class A ITE is a category of all other ITE which satisfies the class A ITE limits but not the class B ITE limits. Such equipment should not be restricted in its sale but the following warning shall be included in the instructions for use:

Warning - This is a class A product. In a domestic environment this product may cause radio interference in which case the user may be required to take adequate measures.

European Community Compliance Statement (Class A)



This product is herewith confirmed to comply with the requirements set out in the Council Directives on the Approximation of the laws of the Member States relating to Electromagnetic Compatibility Directive 2014/30/EU.

Warning - This is a Class A product. In a domestic environment this product may cause radio interference in which case the user may be required to take adequate measures to correct this interference.

DISCLAIMER

No warranty or representation, either expressed or implied, is made with respect to the contents of this documentation, its quality, performance, merchantability, or fitness for a particular purpose. Information presented in this documentation has been carefully checked for reliability; however, no responsibility is assumed for inaccuracies. The information contained in this documentation is subject to change without notice.

In no event will AVer Information Inc. be liable for direct, indirect, special, incidental, or consequential damages arising out of the use or inability to use this product or documentation, even if advised of the possibility of such damages.

TRADEMARKS

“AVer” is a trademark owned by AVer Information Inc. Other trademarks used herein for description purpose only belong to each of their companies.

COPYRIGHT

©2017 AVer Information Inc. All rights reserved.

All rights of this object belong to AVer Information Inc. Reproduced or transmitted in any form or by any means without the prior written permission of AVer Information Inc. is prohibited. All information or specifications are subject to change without prior notice.



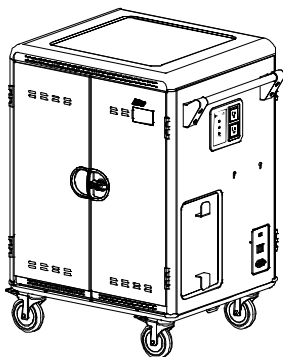
The mark of Crossed-out wheeled bin indicates that this product must not be disposed of with your other household waste. Instead, you need to dispose of the waste equipment by handing it over to a designated collection point for the recycling of waste electrical and electronic equipment. For more information about where to drop off your waste equipment for recycling, please contact your household waste disposal service or the shop where you purchased the product.

Contents

Package Contents	1
Dimensions	1
Diagram	2
LED Indicators	3
Secure the Cart	3
Door Lock	4
Cable Management	5
Charging Cart	7
Intelligent Timer	8
Firmware.....	8
Troubleshooting	9
Specifications.....	10
Service and Warranty	11

Package Contents

The following items are included in the package. Please check if each item is available before using.



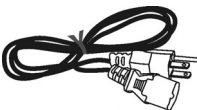
S42i+ Cart



User Manual

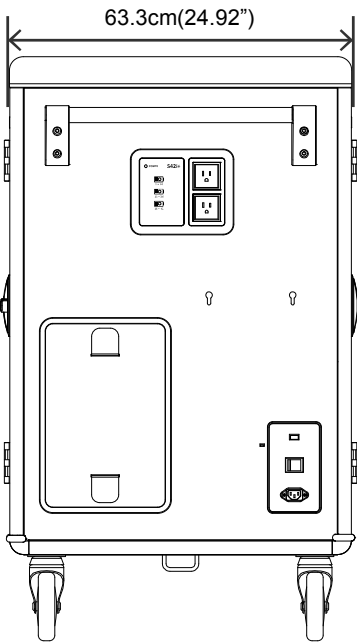
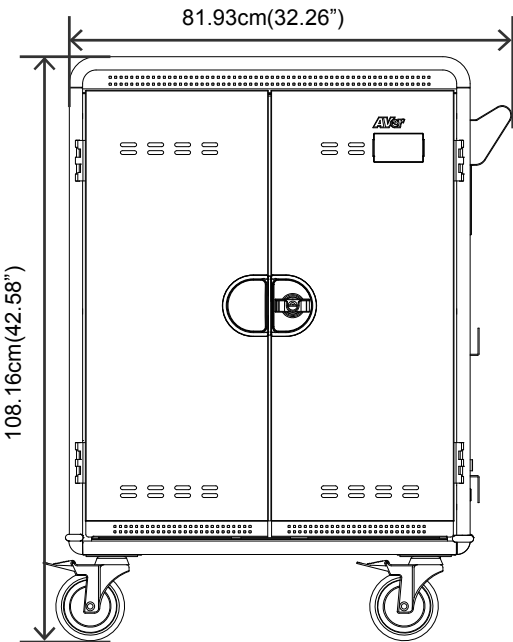


Key x 2

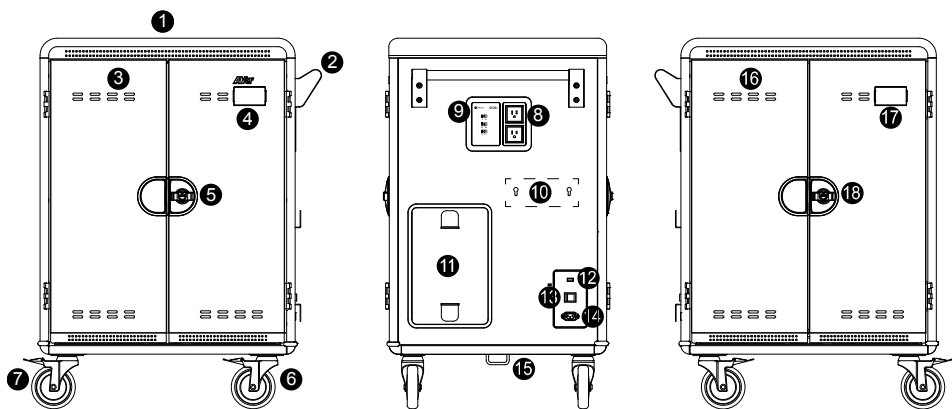


Power Cord

Dimensions



Diagram

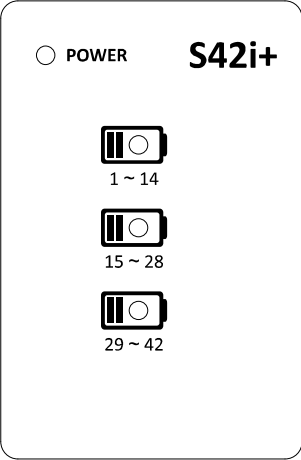


Front	Side	Back
1. Work platform	8. Auxiliary outlets	16. Ventilation holes
2. Handle	9. LED panel	17. Name card holder
3. Ventilation holes	10. Mounting points for Access point** holder(optional)	18. Door lock
4. Name card holder	11. Power cable wrap brackets	
5. Door lock	12. USB firmware upgrade port	
6. 5" Locking caster	13. Power switch	
7. 5" Directional lock caster*	14. Power inlet	
	15. Security hook	

*Keep the cart rolling in the fixed direction.

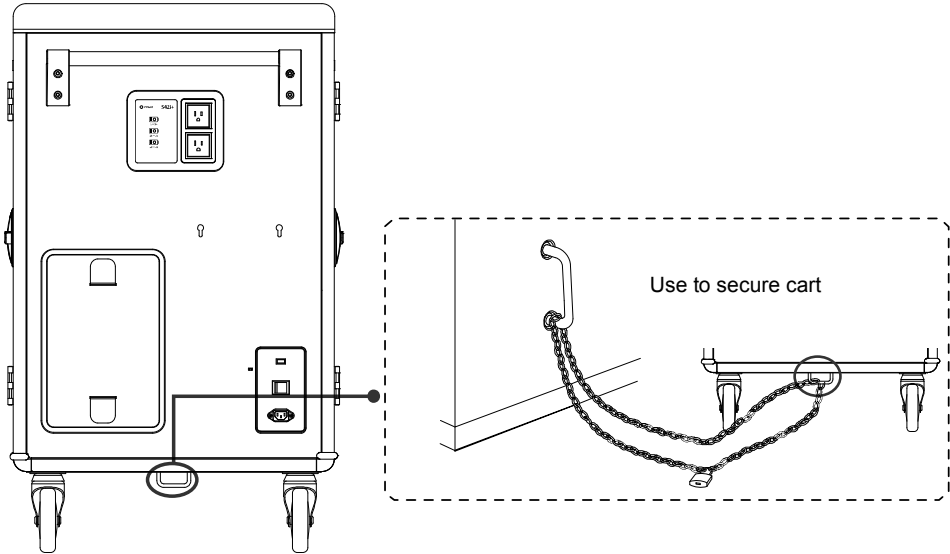
** Please make sure the Access point holder is balanced and installed securely to cart.

LED Indicators



LED	Status
Power x1	<div>1. Solid Green: ON</div> <div>2. Flashing Orange: Current Overload</div> <div>3. Flashing Red: Abnormal Failure (Contact Support)</div> <div>4. Flashing Green and Orange: Current Overload – Aux is turned off</div>
Device Status	<div>1. OFF: No Charging</div> <div>2. Solid Blue: Charging</div>

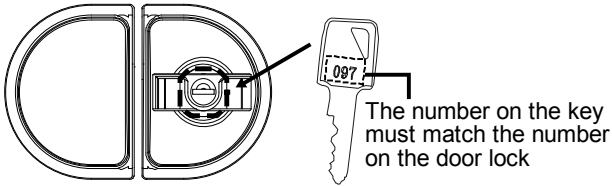
Secure the Cart



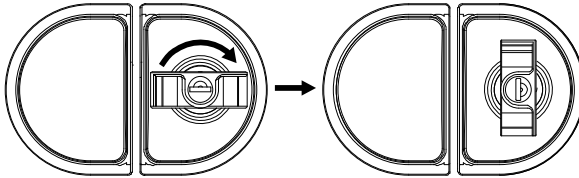
Door Lock

■ Unlock the door

- ① Use key to unlock the door.



- ② Turn the door lock to vertical position to open the door.

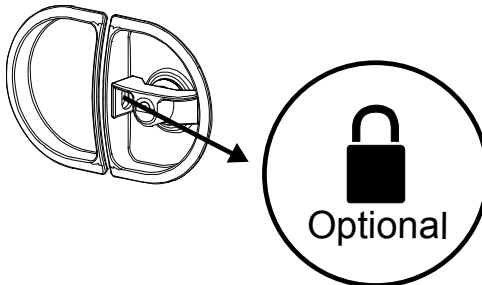


■ Lock the door

To lock the door, close the door and turn the door lock back to horizontal position.

Then, use the key to lock the door.

For more security, use shackle to double secure the door.



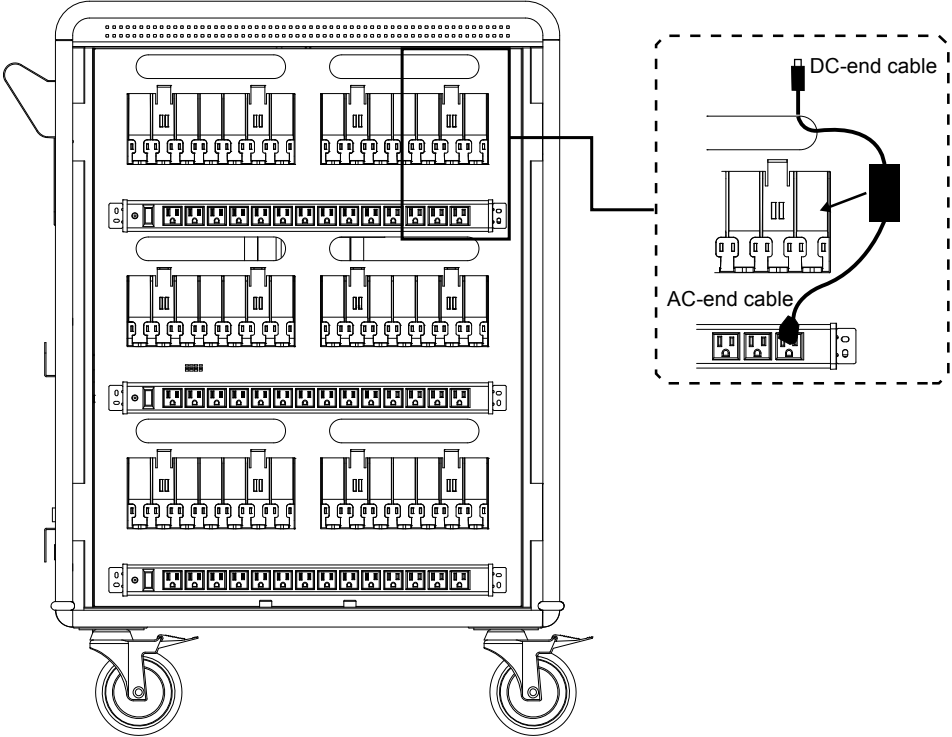
[Note] The shackle dimension of front and back doors are limited to Ø8mm (0.31").

Cable Management

[Note]

1. It is recommended to use cable ties (optional) to secure and manage cables.
2. It is recommended to allocate 2 persons for efficient device cabling.

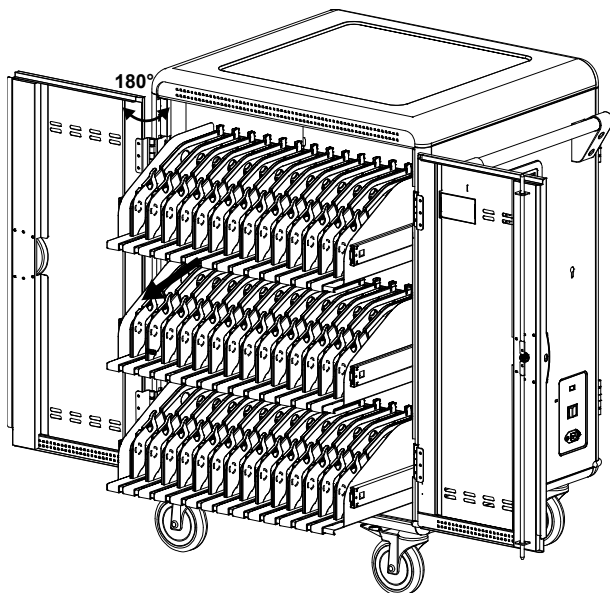
Back



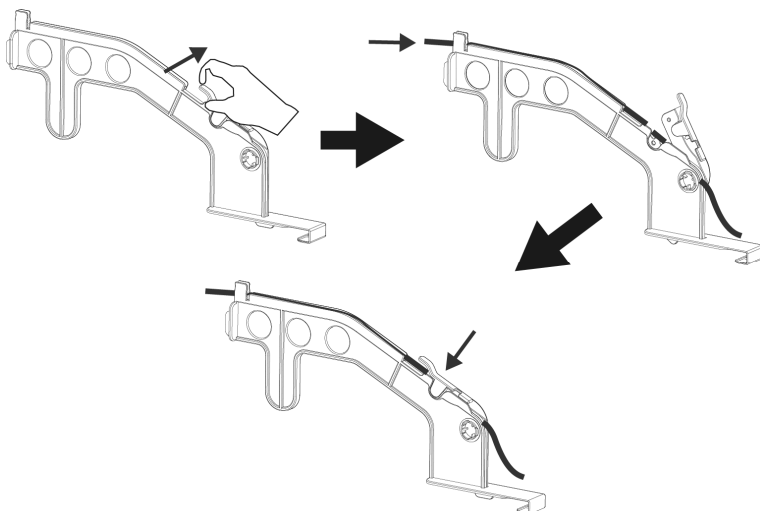
1. Open rear door.
2. Place the power adapter into the individual adapter compartment.
3. Pass the DC-end of the adapter cable to the front of the cart through the space provided.
4. Plug-in the AC-end power cord to the corresponding power AC socket.
5. Secure the bundle cables with cable tie or zip-tie (not supplied).

Front

1. Open front double doors
2. Pull out each shelf until it is fully extended.

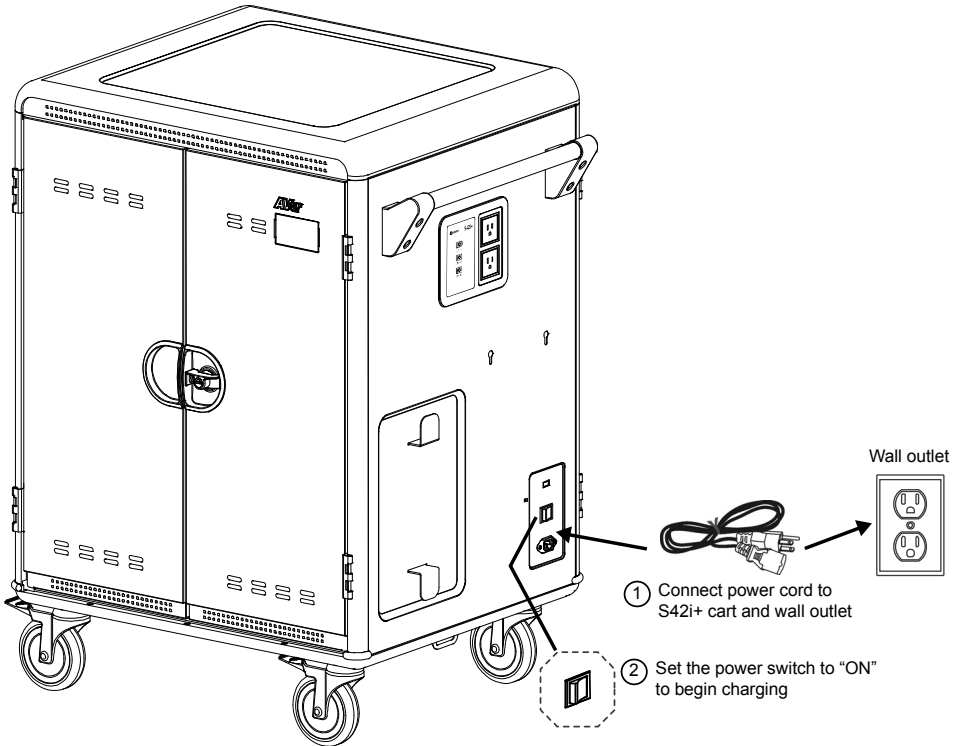


3. Release the cable clamp.
4. Route the adaptor DC-end cable. Along with the V-shape routing groove.



5. Snap the locking piece to firmly secure the DC-end cable.
6. Place the mobile device into the bay.
7. Plug in the DC-connector to the mobile device.

Charging Cart

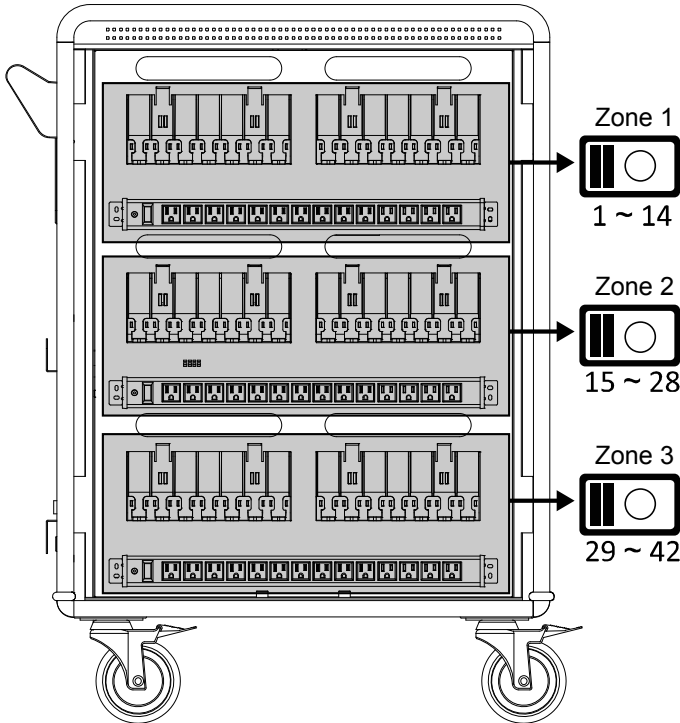


[Note]

1. Set the power switch to the **OFF** position before plugging the cart to wall outlet.
- 2.* Auxiliary outlet and power inlet type may vary as they are country dependent.

Intelligent Timer

42 bays for S42i+ are divided into 3 zones (14 bays for each zone).



Firmware

Firmware can be upgraded with typical USB thumb drive via with external Type-A USB port. Please follow the steps below to upgrade your firmware:

1. Prior to updating, make sure the USB thumb-drive is formatted to FAT or FAT32 filesystem.
 2. Copy the firmware binary file (*.bin) to USB thumb-drive.
 3. Turn **OFF** S42i+ and then insert the USB thumb-drive.
 4. Turn **ON** S42i+ and the firmware upgrade will update automatically. The Power LED will cycle through the following display **GREEN → RED → ORANGE**.
- [Note]** Device status LED are **ON** (Solid Blue) by following sequence **Zone 1 → Zone 2 → Zone 3** during the upgrading.

5. Once the firmware upgrade is completed, the power LED will still display **GREEN → RED → ORANGE** in cycle, and the device charging status LED will always turn **ON** (Solid Blue).
6. Turn **OFF** S42i+, remove the USB thumb-drive.

[Note]

S42i+ supports USB thumb-drive for the following criteria:

1. FAT or FAT32 filesystem (need to format if necessary).
2. 32GB capacity maximum.
3. USB 2.0 high speed interface.

Troubleshooting

Q: Why are all of my devices plugged in but not charging?

- A:
1. Make sure power cords are undamaged.
 2. Make sure power cords are firmly inserted into the available socket with stable current.
 3. Make sure the power plug and current consumption are compliant with your country specification standards.

Q: My cart's main power cord or cart components are damaged. Are they covered under warranty?

A: We provide a 10 year warranty on the cart and tray, and 5 years warranty on the electrical components.

Q: How do I know if my devices will exceed more than the allotted current?

A: Have a qualified electrician verify the current consumption of your devices. Perform the test with devices installed and batteries discharged.

Q: When I plug in the device it trips the circuit breaker. What is wrong?

A: You may have other equipment or appliances sharing the same circuit that is causing a circuit overload. Have a qualified electrician check that adequate power is available in the circuit.

If your question was not addressed, we are happy to help. Contact us via phone and email as follows.

Toll-free: 1(877)528-7824

Local: 1(408)263-3828

support.usa@aver.com

Specifications

Model	S42i+
Capacity	42 (three shelves, 14 bays per shelf)
Supported Devices	Laptops/Chromebooks/Tablets up to 14"
AUX Outlets	2
LEDs Status Indicators	Status LED (x3): Solid Blue when charging
Charging Type	AC Adaptive Intelligent Charging
Power Specification	AC IN: 100~120V, 50/60Hz, 12A Power Strip: 100~120V, 50/60Hz, 12A Outlet: 100~120V, 50/60Hz, 12A
Security	Front Doors: 3-point locking mechanism with padlock hole Rear Doors: 3-point locking mechanism with padlock hole [Note] Padlock is not included in the package
Casters	Four 5" casters: two are lockable and two directional lock
Pull-out Shelves	Yes
Intelligent Charging	Yes
Working Temperature	0°~30°C
Working RH%	10%~90%
Storage Temperature	-40°C~60°C
Storage RH%	5%~95%
Top Surface(work platform)	20kg (44.1lbs)
Shelf Support Weight(ea.)	35kg (77.2lbs)
Adapter Shelves(ea.)	3.5kg(7.7lb)
Access point holder Loading	3kg

Model	S42i+
Warranty	10 years cart and tray 5 years electrical components
Cart Dimensions (W x D x H)	81.93 (W) x 63.3 (D) x 108.16 (H)cm 32.26"(W) x 24.92"(D) x 42.58"(H)
Slot Dimensions (W x D x H)	3.4(W) x 38(D) x 25(H)cm 1.34"(W) x 14.96"(D) x 9.84"(H)

Service and Warranty

All of our products come with a quality and safety assurance.

For customers located in North America, please visit the AVer USA support site for comprehensive RMA, Warranty, and Service information:

<http://averusa.com/classroom-technology/support/>

For customers located outside North America, please visit AVer Global support site: <http://www.aver.com/>